



ST. MARTIN'S PLAYERS



PRESENT OUR 100th PRODUCTION

Snow White

*directed and produced by
Sue Adams, Dave Barnett and Wendy Barnett*

Friday 30 January 2026 7:30pm

Saturday 31 January 2026 2:30pm, 7:30pm

Friday 6 February 2026 7:30pm

Saturday 7 February 2026 2:30pm, 7:30pm

at the Huxtable Hall, St Martin's Church, Erith Road, Bexleyheath

PROGRAMME

£1

WELCOME TO THE SHOW!

WELCOME TO OUR 100TH PRODUCTION!

Well, we are calling it that anyway: some could question whether we should include the plays performed at the Danson Festival or just the ones from our stage, or count the one-act plays separately. We also haven't yet performed our 99th production: *Beyond A Joke*, which was due to be presented last September unfortunately had to be postponed for reasons beyond the group's control – we hope to fit this in during the autumn, and we shall proceed with our 35th pantomime as our special celebration. You can read a little more about our 35-year history later in this special programme (thank you to everyone who helped to supply the photos from the early years).



As something rather different, we have returned to one of our early scripts: *Snow White And The Seven Large Dwarves* – our second ever panto from 1992. We have made some updates to make it *Snow White And The Seven Guardians Of The Forest*, adding some up-to-date jokes and references, while retaining some of the old humour (how many nineties references can you spot?).

In the early days, the Players wrote their own scripts: Directors Sue and Dave were involved then, with Dave also playing one of the Dwarves (can anyone guess which one?!). Daryl, our original Queen, is the only member of the group from the original who is also appearing on stage this time (she is now playing *The Mirror*), and the omnipresent David Batchelor once again provides the technical expertise. Many members of the group have come and gone over the years, but we welcome some new blood for this show: we welcome Alan and Richard D to the first time, while Clive and Maxine, who first joined us for last year's radio play, appear in their first pantomime with us. There are also several young members joining the chorus for the first time, including Amie-Rose, whose mother was in the junior chorus back in 1992.

Once again, we can't make everything happen without the wonderful team of people who see to scenery, costumes, make-up, lighting and sound – all months in the planning for just six special performances. We thank everyone who has been involved, thank you all for joining us and hope you enjoy our 100th production in St Martin's Church's 90th year.



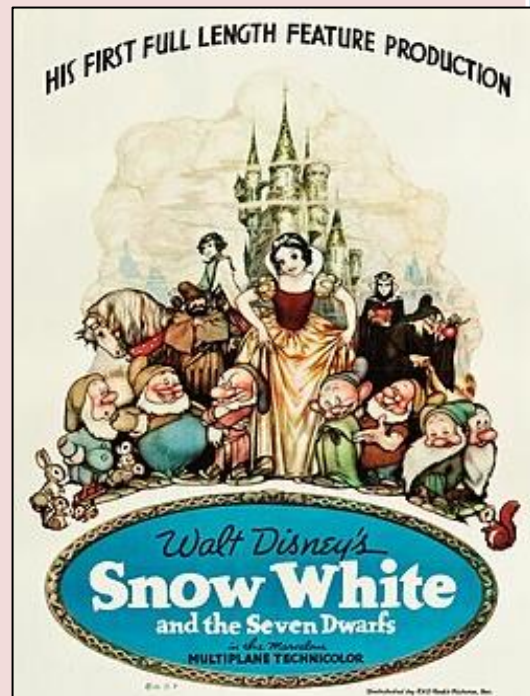
THE STORY

'Snow White' was first published in 1812 by the Brothers Grimm; two German brothers who popularised many well-known fairytales from other parts of the world as well as writing their own.



The story, originally known as '*Sneewittchen*' has had several adaptations, with the same key elements featured regularly: the magic mirror, the poisoned apple, a glass coffin, an evil queen and seven dwarves. The dwarves only first received names in a Broadway play a century after the story was first told: they were known as Blick, Flick, Glick, Snick, Plick, Whick, and Quee (the youngest, at 99 years of age).

Like many fairytales we have come to love, Walt Disney's version is the one that so many people relate to, with Snow White's iconic look and the names of his dwarves being the best known (though names such as Baldy, Shorty, Tubby and Burpy were also considered – he was probably wise to leave those out). It was the first feature-length animation ever produced, taking four years from its initial inception to release, taking a great risk for the company, with Disney mortgaging his own home to finance the production.



The risk paid off, as the film has become the highest-grossing animated film ever (once adjusted for inflation); in 1938, Disney was presented with an Honorary Academy Award – one large Oscar and seven miniature Oscars.

THE PLAY

ACT ONE

- Scene 1 – The Royal Palace
- Scene 2 – The Queen's Bedroom
- Scene 3 – The Queen's Bedroom
- Scene 4 – The Forest
- Scene 5 – Inside The Guardians' Cottage
- Scene 6 – The Queen's Bedroom

INTERVAL

Refreshments will be available in the Small Hall.



ACT TWO

- Scene 7 – Inside The Guardians' Cottage
- Scene 8 – Inside The Guardians' Cottage
- Scene 9 – The Woods
- Scene 10 – Outside / Inside The Cottage
- Scene 11 – The Queen's Bedroom
- Scene 12 – The Grassy Knoll
- Scene 13 – A Bit Of A Sing-song!
- Scene 14 – The Royal Palace



If you would like to take advantage of our hearing induction loop system, please adjust your hearing aid to the 'T' setting.

PLEASE SUPPORT OUR RAFFLE



As usual, we will hold a raffle for charity at each performance. Tickets will be on sale before the performance and during the interval; the draw will take place during final act, and the winning numbers will be announced at the end of the performance.



The Friends Of The Royal Marsden are an organisation that has provided volunteers and funding for equipment and service to benefit patients, carers and staff at the well-known cancer hospital in Chelsea for over 90 years.



Registered Charity No. 222613

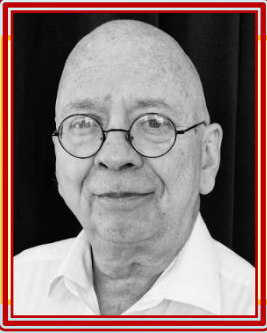


As well as looking after the shop and café, the Friends help to deliver nourishment and activity supplies to bedside, display flowers and maintain the garden areas, among providing many other services to those who need it.

friendsroyalmarsdenchelsea.uk



THE CAST



CLIVE MADEL as The Narrator

An experienced performer, Clive has featured in many productions prior to joining us last year for our radio play, *The Diamond Necklace*, providing the voices of an American, an Australian and a phoney Italian – this time he will helping to tell the story using his normal voice.

PAUL BERGMAN as Dame Clutterbuck

Since first appearing as a member of the 'Sunshiners' chorus in *The End Of The Pier Show*, our first musical production in 2004, Paul has played various interesting characters, last appearing in *Fish Out Of Water* in 2024. He now plays our Dame for the fourth time – anyone would think he enjoyed it!



JAMES RILEY as The King

Another newer member with plenty of experience on stage, James first appeared as the King in last year's panto (hopefully he won't get such a faceful of cake mix or be knocked out by a giant spoon this time). More recently, he played the role of the police inspector in our radio play.

CHRISTINE BELSHAM as Queen Phabella

Christine now adds another prominent role to her portfolio: initially joining us for our 2009 panto, her roles have increased in size and diversity, from purely nice characters (a vicar and a few fairies) to some that are not so nice (battleaxe wives and someone who elopes) – this is her most evil role to date.

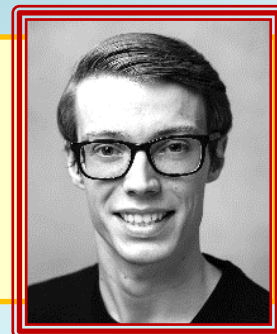


HARRY OWEN as Arnie

First appearing in *Rapunzel* in 2018, Harry has played several larger-than-life characters, from comedy duos, silly servants and the Dame in *Puss In Boots '23*; other characters have included cockney a holidaymaker, a pub singer and a flamboyant designer. Watch out for future productions – he'll be back!

JAMES BELSHAM as Danny

Originally a member of our young chorus in *Little Red Riding Hood* in 2008, James has progressed to many significant roles, from Buttons to Puss, and even Dr Frankenstein. As well as getting involved in set building, he directed *Move Over Mrs Markham* a few years ago, and is ready to direct our next play.



THE CAST



DARYL O'SULLIVAN as The Mirror

Daryl is the only member of our cast who appeared in our original *Snow White* panto in 1992, when she played the Queen. Joining the group on-and-off over the years, she now takes smaller roles and vital backstage tasks such as Prompt; last year she joined James B as a foley artist for the radio play.

SABRINA BELL as Snow White

Sabrina is no stranger to our stage: she has enthusiastically directed two of our recent pantomimes (*Puss In Boots '23* and *Sleeping Beauty '25*). She is appearing on stage in one of our productions for the first time, so we hope you will be stunned by her wonderful singing voice and years of theatre experience.



ALAN WALTER as Orion the Huntsman

Having been acting since the age of 20, Alan has played various roles in comedy and drama performances such as *Dad's Army*, *The Sunshine Boys*, *The Weekend*, and most recently, *1984* on our stage with different group last autumn: we welcome Alan to his first St Martin's Players production.

VAL COATES as Grouchy

Val has featured regularly in our plays for over 18 years and is the only lady to have played a Dame (an Ugly Sister in 2012 and Widow Twankey in 2016). The roles she plays show her ability to play a serious or grumpy character in a comic way, never failing to gain a laugh – this panto is no exception.



JULIE EXELL as Cheery

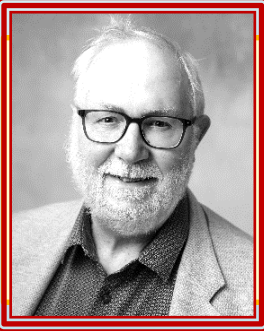
For over 30 years, Julie has sourced costumes and made our casts look fabulous, often taking on the challenge of performing as well. Recent appearances include our radio play and our last panto (where, like this time, she is alongside fellow costumier Monica and props expert Marion).

DEBRA GAVIN as G.P.

Debra has appeared in several roles since *Cinderella '93*, our fifth show. Along with husband Barry, they have directed some of our most memorable pantomimes: they were responsible for our popular Dwarves number, repeated in other random pantos recently – now it's their turn to give it a go!



THE CAST

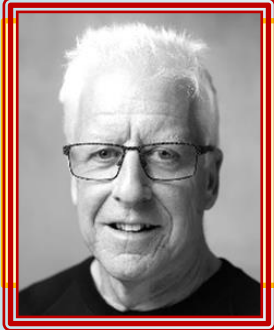


RICHARD PERCIVAL as Skyly

Richard served for many years as our group's Chairman and has appeared in at least half of our productions; he was the Dame in our last version of *Snow White*. Last appearing as the Chief Superintendent in the radio play, nowadays he prefers smaller roles – a shame we aren't referring to 'dwarves' this time.

MONICA CANE as Snoozy

Monica is the only player who is reprising the role of a dwarf / guardian – she was known as Grumbly in 2011. She played the leading lady in *The Diamond Necklace* last year but always enjoys a panto, helping the men to get dressed up as women – and a certain role in the dwarves' routine...



BARRY GAVJN as Sniffly

First appearing as a baby in a pram in *Babes In The Wood* in 1995, Barry's face has appeared regularly in our pantomimes – last year as Spindleshanks, Caraboss's cat. He is also responsible for many of the larger pieces on the set, from magic mirrors to coaches, there isn't much he hasn't had to build.

MARJON BJRAM as Brains

Marion originally joined us to keep Val company, but has been heavily involved in sourcing props for the performances, while regularly making appearances on stage. In recent years, she has appeared in *Afternoon At The Seaside*, *Sleeping Beauty '25* and *The Diamond Necklace*.



RAE CALNAN as Prince William

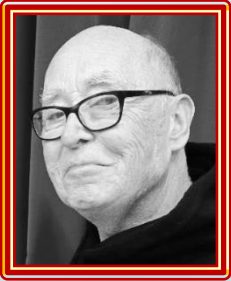
Rae is one of our busiest members: in the last year, she played the villainous Carabosse and directed our radio play. She chairs our group's committee, applies make-up to our faces, leads our social media presence and promotes our activities, even being heard on local radio last year.

MAXJNE DOYLE as the Gypsy Queens

Maxine is another of our newer members who brings much experience to our stage. Her debut was in *The Diamond Necklace*, where she voiced the murdered maid and several other minor roles. This time, she just makes a few brief appearances – no doubt we'll see her in many more plays soon.



THE CAST



WAYNE OSBOURNE as The Major-Domo

Wayne joins us for his fourth production on our stage, taking on smaller roles and non-speaking characters, including a caretaker (*Ten Times Table*), a zombie (*Sleeping Beauty '25*) and a security guard (*The Diamond Necklace*). He is always keen to join in the fun and never misses a rehearsal.

LOLA EVANS as Young Snow White

GRACIE ZANETTI as The Young Prince

Gracie has previously appeared in *Puss In Boots '23* and *Sleeping Beauty '25*. Lola is now joining us for her sixth pantomime, first appearing in *Jack And The Beanstalk* in 2020.



RICHARD DRUMMOND

and BEX PRYOR as Daisy the Cow

Richard joins us for his first appearance on stage, whereas Bex has been treading our boards in pantos since 2018. While we won't see much of them, they are very valuable to us backstage.

...and THERMJDOR THE LOBSTER

No panto would be without our little friend who has shown up so many times, but no one remembers why! He has been seen on dinner tables, shop displays, ship's rigging, and even under skirts and down trousers – where will you spot him this time?



JUNIOR CHORUS



- ROSIE BERRY**
- EVJE-JANE DAVJS**
- LOLA EVANS**
- BREE GALESLOOT**
- OLLIE GULL**
- ELODJE HERRJMAN**
- JESSICA MAKER**
- MAJSJE MAKER**
- AMJE-ROSE OSWALD**
- ARJA RICKETTS**
- EMJIE RICKETTS**
- KATJE WARD**
- GRACIE ZANETTI**

THE CREW

<i>Musical Director</i>	PETER WILSON
<i>Prompt</i>	HAZEL BERGMAN
<i>Choreography</i>	SABRINA BELL
<i>Stage Manager</i>	MARK BELSHAM
<i>Stage Crew</i>	RICHARD DRUMMOND STEVE MORLEY
<i>Properties</i>	MARION BJRAM
<i>Wardrobe & Costumes</i>	SABRINA BELL MONICA CANE JILL CARVER JULIE EXELL BEX PRYOR
<i>Make-Up</i>	RAE CALNAN
<i>Set Construction</i>	DAVE BARNETT DAVID BATCHELOR JAMES BELSHAM MARK BELSHAM BARRY GAVIN CHRIS SUGGITT
<i>Lighting & Sound</i>	DAVID BATCHELOR CHRIS SUGGITT
<i>Follow-Spot</i>	JONATHAN BATCHELOR
<i>Box Office</i>	SUE ADAMS
<i>Front Of House</i>	FRIENDS OF THE PLAYERS
<i>Refreshments</i>	2nd BARNEHURST GUIDES
<i>Poster</i>	DAVE BARNETT
<i>Programme</i>	STEVE MORLEY

THE 'USUAL' SMALL PRINT... Please note that smoking is not permitted anywhere in the building. As a courtesy to those on stage and in the audience, please turn off your mobile 'phone and refrain from using flash photography. Fire exits are located at either side of the stage and at the rear of the hall; in the unlikely event of an emergency, please leave the hall by the nearest safe exit and assemble in the car park. Thank you.

OUR HISTORY – THE 1990s

The St Martin's Players had existed several years earlier, but it was decided to put on a pantomime to help raise funds as part of the Church's 'Project 91'. The initiative was taken by Dave and Sue Adams (with others): from that one-off event, the group was reborn. In the early days, the performances may have been a bit ropery and sets were built to the same standards of early *Crossroads* or *Doctor Who* episodes, but the enthusiasm and ambition were there. Early panto sets comprised cartoonish backgrounds and props, with two large prisms dominating the stage, rotated to give different scenes. While scripts for plays were usually bought in, contributions for our pantomimes were made by a wide range of members, including local references and topical jokes, with special group performances by 'tribute acts' such as 'Fake That', 'The Golden Girls' and 'The Three Fivers'. During the early years, there were several revues reprising and showcasing our talents, but our biggest achievement of the decade was turning the Church into a theatre (even with tiered seating) for their 60th anniversary, presenting *The Roses Of Eyam*. The decade ended with our only stage play penned by one of our own members, *Pride And Joy*, written by Martin Stone.



See How They Run! 1991



Snow White 1992



Virtue Triumphant



Cinderella 1993



Post Horn Gallop



Babes In The Wood

OUR HISTORY - THE 1990s

A 1990s
St Martin's
Revue



When We Are Married



Pardon Me! Prime Minister



The Roses
Of Eyam



Jack And The Beanstalk 1997



Mother
Goose
1999

Pride And Joy



Blithe
Spirit

- | | | | |
|------|---|------|----------------------------------|
| 1991 | Sleeping Beauty | 1996 | Dick Whittington |
| | See How They Run! | | When We Are Married |
| 1992 | Snow White And The Seven Large Dwarves | | The Roses Of Eyam |
| | Virtue Triumphant | 1997 | Jack And The Beanstalk |
| 1993 | Cinderella | | Pardon Me! Prime Minister |
| | Continental Quilt | | Murder In Company |
| | Surprise Package | 1998 | Puss In Boots |
| 1994 | Aladdin | | Pull The Other One |
| | Laugh! I Nearly Went To Miami | | Blithe Spirit |
| | Post Horn Gallop | 1999 | Mother Goose |
| 1995 | Babes In The Wood with Robin Hood | | Bedroom Farce |
| | Keeping Down With The Joneses | | Pride And Joy |
| | Play On! | | Last Tango In Barnehurst |

OUR HISTORY – THE 2000s

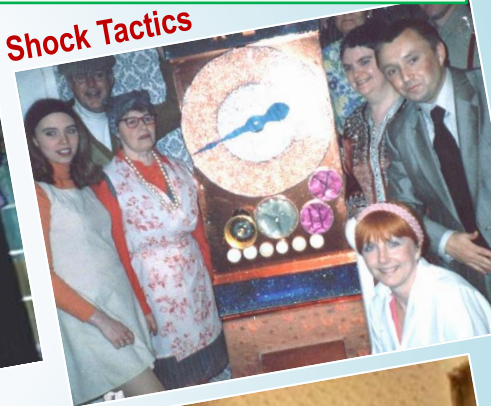
We started the decade with a celebration of our tenth year by revisiting our first play, *See How They Run!*. While the early panto traditions of a new story and a new Dame each time had now fallen, Thermidor the Lobster continued to make his annual appearances. We were also joined for special performances from 'The Lost Boyzone' and 'The Spice Girls'. In 2002, the first time we revisited a panto story, we welcomed Peter, our long-standing Musical Director, who has been vital to our success for many years. In our second decade, we broke new ground with performances of short plays written just for the Danson Festival, and our first musical production (*The End Of The Pier Show*). We returned to the Church to perform *Noah's Animals* for their 70th anniversary, returning once more for the Passion Play, *The Day God Died* as one of five productions in 2009: our busiest year also included our first murder mystery evening with a meal (*Barbecues 'R' Murder*) and our only production exclusively starring our young players, *Lady Lollipop*.



Peter Pan



See How They Run! 2000



Shock Tactics



Treasure Island 2001



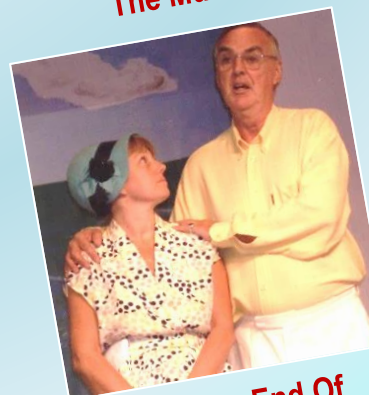
The Murder Room



King Arthur



Party Piece



The End Of The Pier Show

OUR HISTORY – THE 2000S



Bluebeard



Aladdin 2006



Noah's Animals



Murder In Play



Jack And The Beanstalk 2009



The Day God Died



Jekyll And Hyde

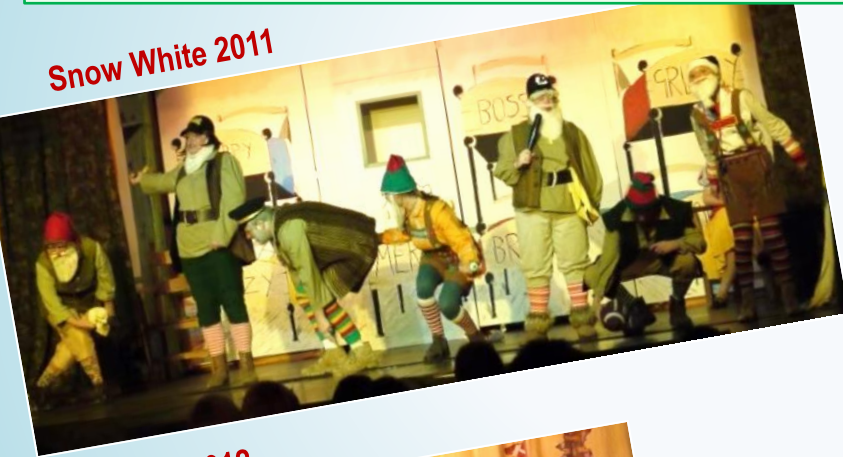
- 2000 **Peter Pan**
See How They Run!
My Friend Miss Flint
- 2001 **Treasure Island**
Shock Tactics
Outside Edge
- 2002 **Cinderella**
The Murder Room
Running Riot
- 2003 **King Arthur**
Party Piece
No Time For Fig Leaves
- 2004 **The Sleeping Beauty**
Kindly Keep It Covered
The End Of The Pier Show

- 2005 **Bluebeard**
A Murder Is Announced
- 2006 **Aladdin**
How The Other Half Loves
Noah's Animals
- 2007 **The Three Musketeers**
Murder Weekend
Out Of Focus
- 2008 **Little Red Riding Hood**
Murder In Play
Toad Of Toad Hall
- 2009 **Jack And The Beanstalk**
The Day God Died
Barbecues 'R' Murder
Lady Lollipop
Jekyll And Hyde

OUR HISTORY – THE 2010s

Into our third decade, we were now far more adventurous with our set designs for multiple scenes and artistic backdrops (such as in *Crazy Capers*, *Dodgy Deals* and *Henry The Tudor Dude*) and advanced lighting and sound effects to create a memorable atmosphere (such as in *The Ghost Train*). The programmes for each production also became more elaborate. Members of our group were recognised with 'Best Supporting Actor' awards from the now-defunct Bexley Drama Awards (Dave in *Panic Stations* and Marion in *Crazy Capers*; the latter play also won a second award for musical excellence). It wasn't just the adults enjoying success: Holly Hazelton, one of our young members, had made her way to the West End, appearing in well-known productions such as *Matilda*. We presented *See How They Run!* once more for our 25th anniversary, and continued to present more musical plays and murder mysteries. We also took a production 'on tour' for the first time: *It's Never Too Late* (a murder mystery) was additionally performed at two other venues – Greenwich Carers Centre and Christ Church Bexleyheath.

Snow White 2011



Alice In Wonderland



Cinderella 2012



Panic Stations



Crazy Capers, Dodgy Deals



The Ghost Train



OUR HISTORY – THE 2010s



The Wizard Of Oz



Hound Of The Baskervilles



Beauty And The Beast

Free And Easy



It's Never Too Late (at Greenwich Carers Centre)



Frankenstein

- | | | | |
|-------------|--|-------------|---|
| 2010 | Dick Whittington
And Then There Were None
Over My Dead Body | 2015 | Sleeping Beauty
The Wizard Of Oz
See How They Run! |
| 2011 | Snow White
Alice In Wonderland
Murder At The New Vicarage | 2016 | Aladdin
Key For Two
Hound Of The Baskervilles |
| 2012 | Cinderella
Panic Stations | 2017 | Beauty And The Beast
I'll Get My Man
It's Never Too Late |
| 2013 | Robin Hood
Crazy Capers, Dodgy Deals
The Ghost Train | 2018 | Rapunzel
Free And Easy
Love Begins At Fifty |
| 2014 | Mother Goose
Henry The Tudor Dude
Murder Backstage | 2019 | Treasure Island
Agatha Crusty And The Murder
Mystery Dinner
Frankenstein |

OUR HISTORY – THE 2020s

After a strong start to the decade, we were then told to stay at home – it was two more years until our next pantomime, and *Cash On Delivery* was finally presented two years late. We made good use of our offstage time sorting and tidying our supplies before resuming business as usual.

The Seven Dwarves surprised our audiences as they performed their popular *If I Was Not In Pantomime* routine in two further pantos, soon drawing the crowds back, along with some of our best young chorus performances. So far this decade, we have built our most advanced set (*The Rule Of Three*, combining a beach, an apartment and a nursing home on one stage) and put on our first radio play, *The Diamond Necklace*, which saw us return to Greenwich Carers Centre for another 'outside broadcast'.



**Cinderella
2022**



**Who Shot
The Sheriff?**



Afternoon At The Seaside



The Patient



Ten Times Table



**The Sleeping
Beauty 2025**



**The Diamond
Necklace**

- 2020 **Jack And The Beanstalk**
- 2022 **Cinderella**
Cash On Delivery
- 2023 **Who Shot The Sheriff?**
Puss In Boots
Move Over Mrs Markham
The Rule Of Three
- 2024 **Afternoon At The Seaside, The Rats, The Patient**
Aladdin
Fish Out Of Water
Ten Times Table
- 2025 **The Sleeping Beauty**
The Diamond Necklace

COME AND JOIN US!

We always welcome new members (over 18s, with opportunities for young people to join our pantomime chorus): whether you want to tread the boards or help backstage, we'd love to hear from you. Just come along to one of our rehearsals (Friday evenings in the Church Hall) or contact us online – we look forward to hearing from you!



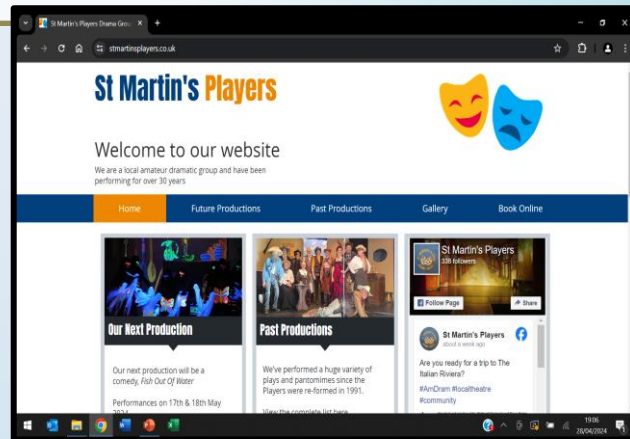
Why not start out with just a small role to see if you enjoy it? You could also try working on props or costumes, being prompt or even directing or producing. You could work alongside our experienced members, learning a new skill before trying something else for the next production.

FOLLOW US ONLINE!

Why not visit our website...

www.stmartinsplayers.co.uk

...to learn more about our archive of programmes and photos from past performances, find out what's coming up and even book your tickets online.



You can also follow us on social media:



stmartinsplayers



stmartinsplayer



st.martinsplayers

Don't forget to like us and leave a five-star review!

PLEASE SUPPORT ST MARTIN'S

PLANT SALE AND SPRING FAIR

**SATURDAY 25 APRIL
10AM - 12PM**

**ST MARTIN'S CHURCH
ERITH ROAD, DA7 6LE**

**RAFFLE
TOMBOLA
CAKES
SOFT TOYS
LUCKY BAGS
BOTTLE TOMBOLA**

**TEA &
COFFEE
BOOKS &
JIGSAWS**

**Don't forget to look out for other special events as
St Martin's Church celebrates its 90th anniversary this year!**

OUR NEXT TWO PRODUCTIONS



A Play by Sandy Rustin
based on the Board Game and Paramount Pictures Film
Directed by James Belsham

22 – 23 May 2026

'It's a dark and stormy night and you've been invited to a very unusual dinner party. Each of the guests has an alias, the butler offers a variety of weapons, and the host is, well... dead. So whodunnit?

Based on the cult classic film and the popular board game, Cluedo is a madcap comedy that will keep you guessing until the final twist.

Readings and auditions will take on Friday 13 February, Wednesday 18 February and Friday 20 February at 8pm in the Small Hall

'BEYOND A JOKE'

A Comedy by Derek Benfield
Directed by Steve Morley



25 – 26 September 2026

